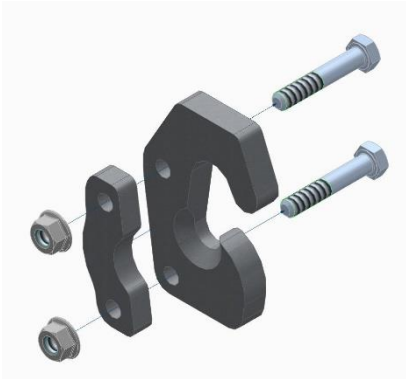


**LIFTING AND TRANSPORT SYSTEM FOR SP8 AND SP8H
USING A JACK WHEEL AND TWO SIDE WHEELS (#A124)**

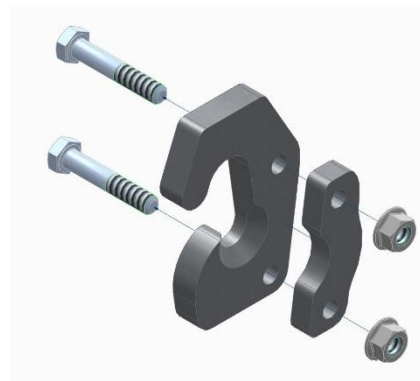
The trowels are equipped with forklift pockets for lifting, as well as the option for crane lifting using slings.

1. Transport System Components

1.1 Left stopper - 2pcs



1.2 Right stopper - 2pcs



1.3 Side wheel - 2pcs

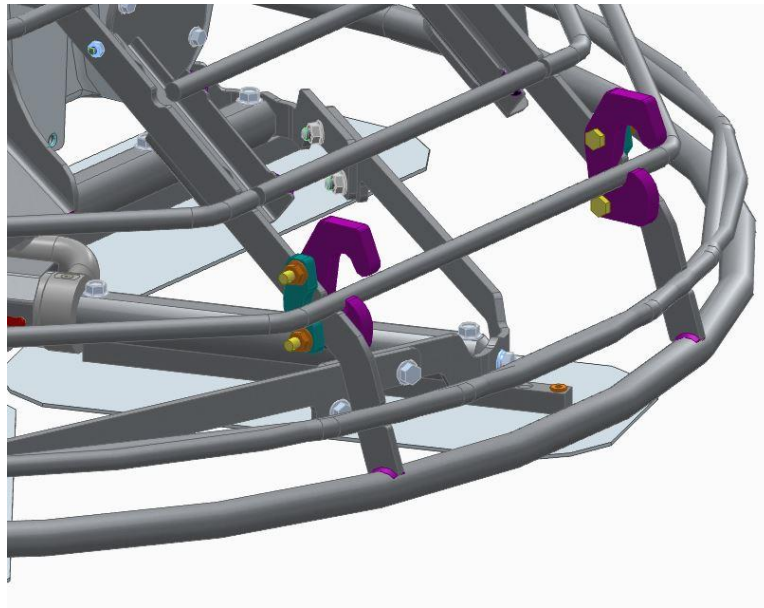


1.4 Jacking wheel assembly - 1pcs



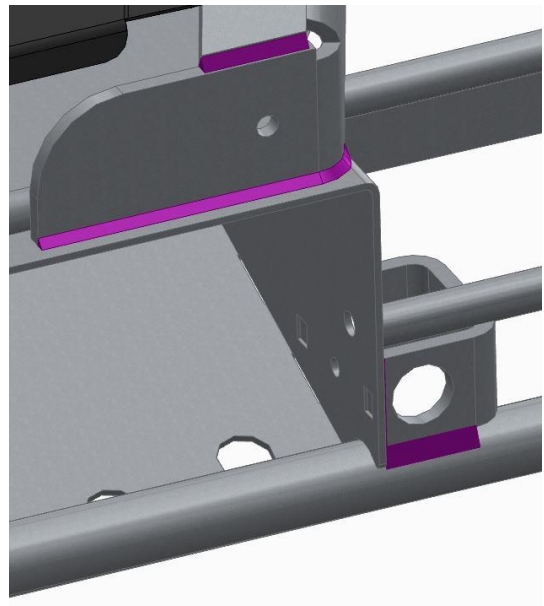
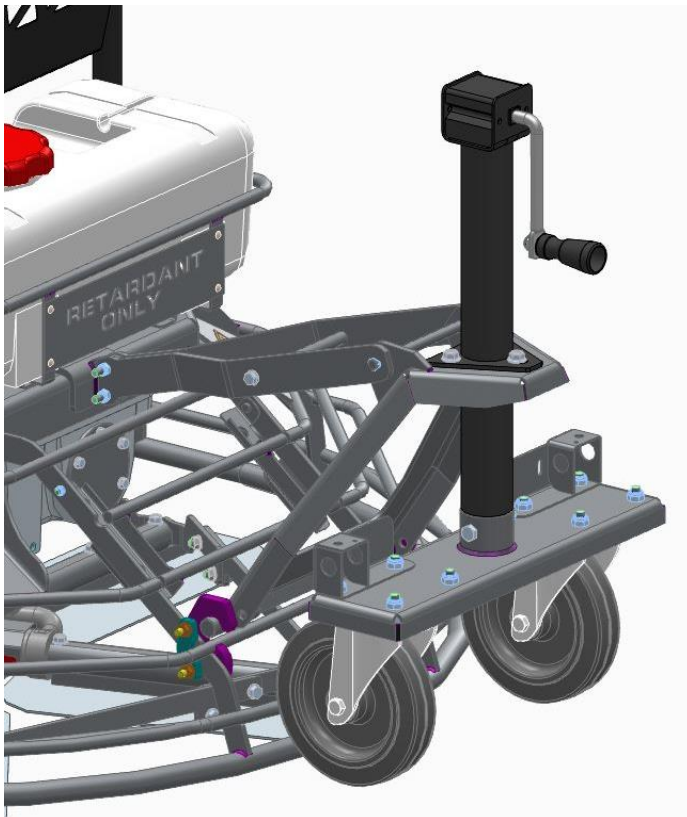
2. Machine Preparation

Preparation consists of mounting the four machine stops, as shown in the figure. The two stops (left and right) differ by the position of the chamfer on the hook.



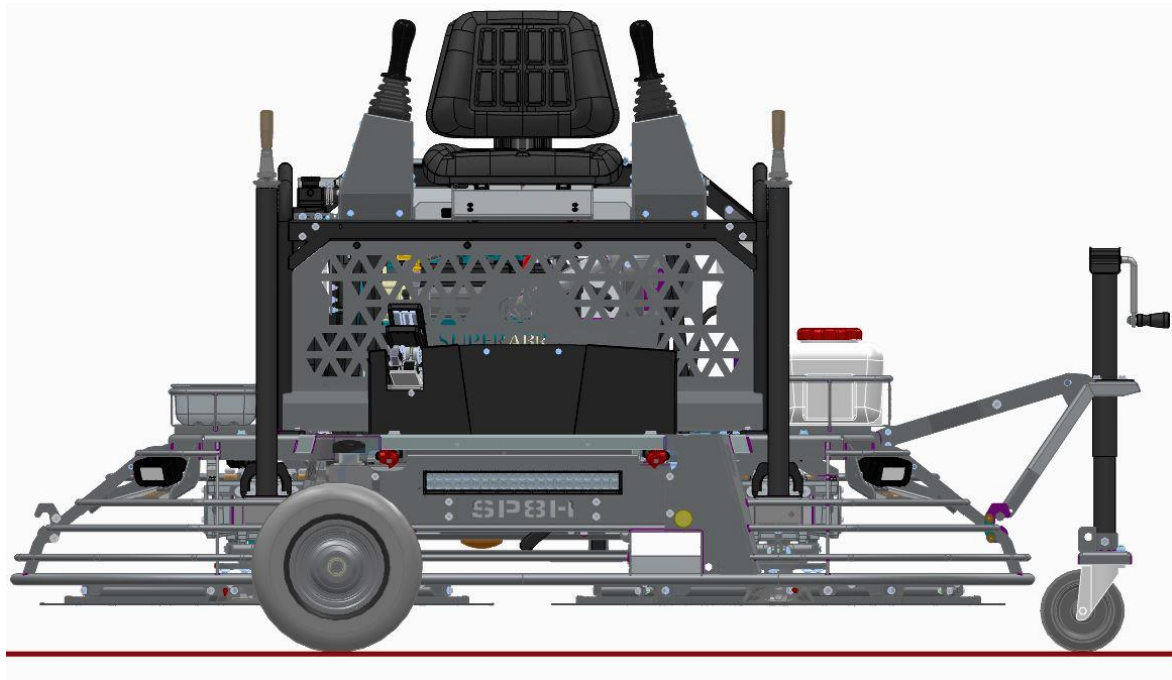
3. Lifting and Moving the Machine

3.1 Position the jacking wheel, as shown in the figure, and lift the machine sufficiently to insert the two side wheels into the adjacent holes.



3.2 Move the jacking wheel to the opposite side and lift it as well.

Both wheels on the jacking unit are swiveling (casters), allowing you to push the machine in the desired direction.



4. Side wheels can be mounted to the jacking wheel for compact storage of the kit.

