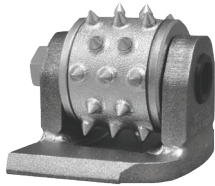




COATING & GLUE REMOVAL

LAVINA BUSH HAMMERS



#X-BH-3 (set of 3 pcs)



- One-step method for stripping, cleaning and profiling (CSP 3, 4 and 5) concrete surfaces in preparation for epoxy coatings and self-leveling or polymer overlays.
- Bush hammers are great for quick aggregate exposure. They produce little airborne dust and it don't damage the surface - suitable for polishing projects.
- Use bush hammers on low rpms.
- Removal rates from 200 to 2000 sf/hr depending on grinder size and thickness of coating.

CARBIDE SCRAPERS



#X-HOLDER-CBL-19



#X-HOLDER-CBL-19-L



- Designed for removing rubbery mastics or heavy elastomeric coatings /adhesives, which can't be removed effectively with bush hammers, because they gum up and smear.
- These tools are direction specific and offered for left and right rotation - check the direction of rotation of the grinding heads. Use the blue tools for all propane Lavina grinders and electric 32" Elite only.
- Aggressive and fast removal rates WITHOUT damaging the subfloor - ideal for use on floors that will be polished.
- Use the scrapers on low RPM.
- Removal rates from 200 up to 2000 sf/hr.

LAVINA PCD TOOLS



#X-PCD
2 pcd segs



#X1B-PCD2
with a metal button



#X-PCD-SB
with sacrificial bars



#X-PCD-L



#X1B-PCD2-L



#X-PCD-SB-L



- ✓ PCD tools are direction specific and offered for left and right rotation - check the direction of rotation of the grinding heads. Use the blue tools for left rotation (all propane Lavina grinders and electric S7 models).
- ✓ PCD's without a metal button or sacrificial bars are very aggressive and designed for thick coating removal. They will leave a very coarse profile on the concrete beneath.
- ✓ PCDs with a metal button or sacrificial bars are less aggressive and are designed for thin coating removal.
- ✓ Use PCD tools on low rpms.

LAVINA METAL BOND TOOLS

- ✓ Metals can be used for removing thin old dried glues, thin epoxy coatings, floor paints, and cure-n-seals.
- ✓ Different bonds for soft, medium, hard and super hard concrete. Always check the hardness of the floor before selecting a bond to avoid glazing or premature tool wear.
- ✓ Offered with one or two in several grit sizes, starting from grit 14.
- ✓ Use metal tools on low rpms.

