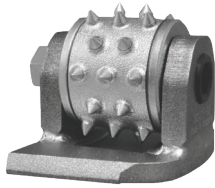


BUSH HAMMERS



#X-BH-3 (set of 3 pcs)



- One-step method for stripping, cleaning and profiling (CSP 3, 4 and 5) concrete surfaces in preparation for epoxy coatings and self-leveling or polymer overlays.
- The process is cost-effective, produces little airborne dust and it doesn't micro fracture the surface.
- Recommended RPM: 550-750 for electric, 1800-2100 for propane.
- Removal rates from 200 to 2000 sf/hr depending on grinder size and thickness of coating.

CARBIDE SCRAPERS



#X-HOLDER-CBL-19



#X-HOLDER-CBL-19-L



- Designed for removing rubbery mastics or heavy elastomeric coatings / adhesives, which can't be removed effectively with bush hammers, because they gum up and smear.
- These tools are direction specific and offered for left and right rotation - check the direction of rotation of the grinding heads. Use the blue tools for all propane Lavina grinders and electric 32" Elite only.
- Aggressive and fast removal rates WITHOUT damaging the subfloor - ideal for use on floors that will be polished.
- Recommended RPM: 550-650 for electric, 1800-2100 for propane.
- Removal rates from 200 up to 2000 sf/hr.

LAVINA

by  SUPERABRASIVE

COATING & GLUE REMOVAL

PCD TOOLS



#X-PCD
2 pcd segs



#X1B-PCD2
with a metal button with sacrificial bars



#X-PCD-SB
with sacrificial bars



#X-PCD-L



#X1B-PCD2-L



#X-PCD-SB-L



- PCD tools are direction specific and offered for left and right rotation - check the direction of rotation of the grinding heads. Use the blue tools for all propane Lavina grinders and electric 32" Elite only.
- PCD's without a metal button or sacrificial bars are very aggressive and designed for thick coating removal. They will leave a very coarse profile on the concrete beneath.
- PCDs with a metal button or sacrificial bars are less aggressive and are designed for thin coating removal.
- Recommended RPM: 550-650 for electric, 1800-2100 for propane.

METAL BOND TOOLS

- Metals can be used for removing thin old dried glues, thin epoxy coatings, floor paints, and cure-n-seals.
- Different bonds for soft, medium, hard and super hard concrete. Always check the hardness of the floor before selecting a bond to avoid glazing or premature tool wear.
- Offered with round and rectangular segments in a complete range of grit sizes, starting from grit 6 & 14.
- Recommended RPM: 550-650 for electric, 1800-2100 for propane.

